

# BPK-SNAP blank plates for KEL-SNAP frames

& KDR-ESR enclosure gland plates / IP54



IP54

RoHS  
compliant

REACH  
COMPLIANCE

Made in  
Germany

Blank plate BPK-SNAP to close cut-outs of pre-assembled [KEL-SNAP frames](#).

A snap frame can be closed, i.e. during transport to avoid entry of dust, as long as a KEL frame is not mounted.

The BPK-SNAP blank plate is simply snapped on the KEL-SNAP frame. There is no tool needed to remove it.

BPK-SNAP 16 and BPK-SNAP 24 for closing cut-outs of the KEL-SNAP mounting frames and unused Slide frames of the [KDR-ESR gland plates](#).

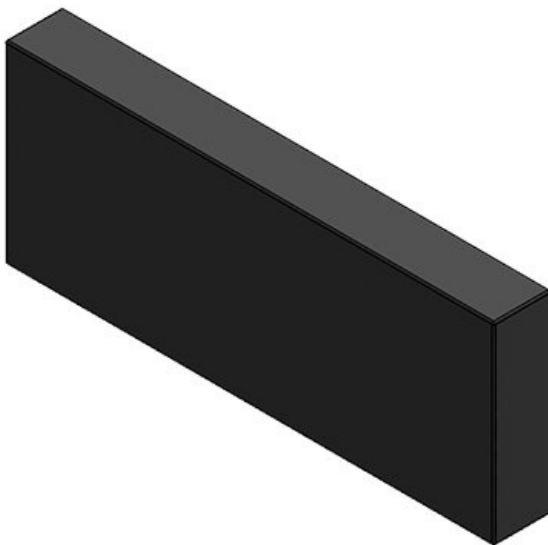
## Specifications

IP rating (EN 60529)	IP54
Material	Polyamide
Flame class	UL94-V0, self-extinguishing
Operating temperature	-40 C° to 80 C°
Properties	silicone free, halogen free
Mounting options	Snap-in with KEL-SNAP

## Advantages & benefits

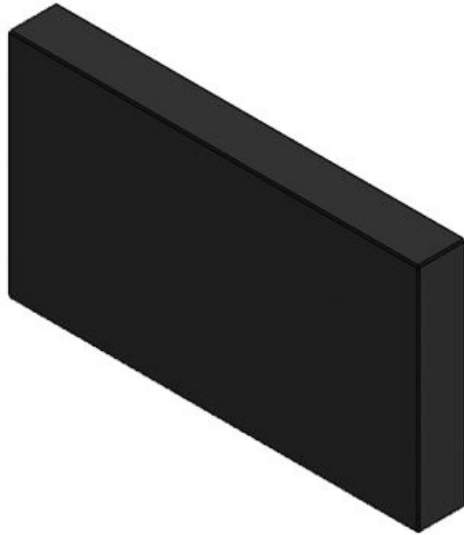
## Product types & sizes

BPK-SNAP 24



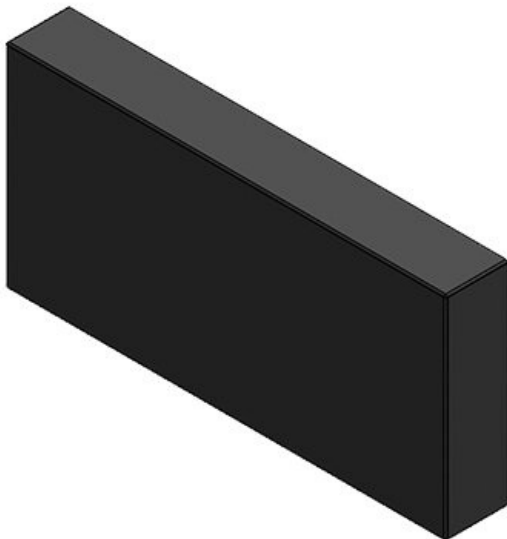
Part No.	<b>42017</b>
EAN	<b>4251269307</b>
	<b>492</b>
Package quantity	<b>10</b>
Length	<b>147 mm</b>
Width	<b>58 mm</b>
Height	<b>17 mm</b>
Suitable for cable entry systems:	<b>KEL-SNAP 24, KEL-SNAP-S 24, KDR-ESR</b>

**BPK-SNAP-24-E**



Part No. **42008**  
EAN **4251269321**  
**511**  
Package quantity **10**  
Length **147 mm**  
Width **83 mm**  
Height **17 mm**  
Suitable for cable entry systems: **KEL-SNAP 24-E**

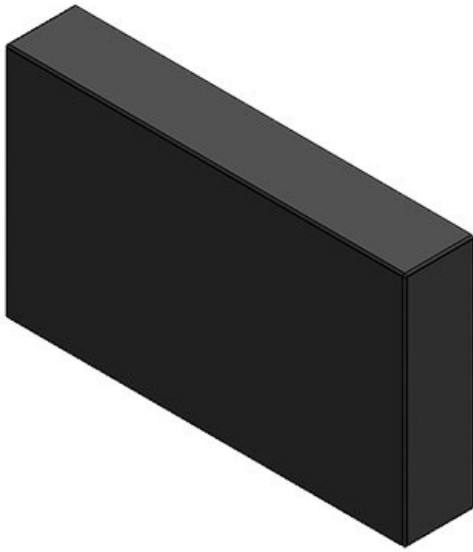
**BPK-SNAP 16**



Part No. **42007**  
EAN **4251269307**  
**386**  
Package quantity **10**  
Length **120 mm**  
Width **58 mm**  
Height **17 mm**  
Suitable for cable entry systems: **KEL-SNAP 16, KEL-SNAP-S 16, KDR-ESR**

**BPK-SNAP 10**

Part No. **42004**  
EAN **4251269307**  
**379**  
Package quantity **10**  
Length **98 mm**  
Width **58 mm**  
Height **17 mm**  
Suitable for cable entry systems: **KEL-SNAP 10, KEL-SNAP-S 10**



**BPK-SNAP-B**

Part No. **42003**  
EAN **4251269307**  
**362**  
Package quantity **10**  
Length **73 mm**  
Width **58 mm**  
Height **17 mm**  
Suitable for cable entry systems: **KEL-SNAP-B, KEL-SNAP-S-B**

